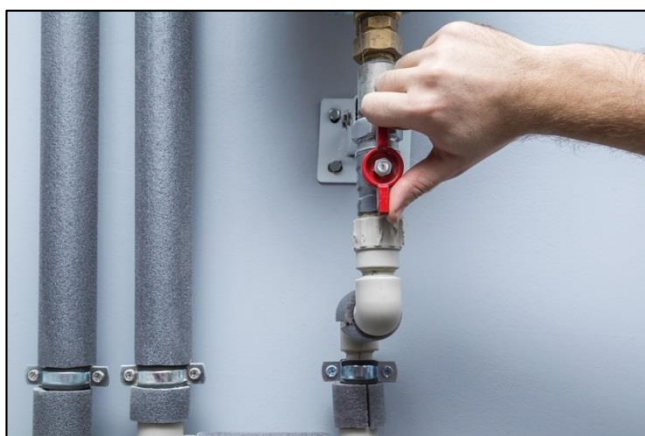


FACT SHEET: WATER EFFICIENT APPLIANCES

Water is a valuable resource. Water efficient appliances and fixtures, combined with sensible water use, can help householders save water and money.

Leaks and breaks can occur with any pipe and fittings due to changing weather or ground conditions, tree roots, construction works or product deterioration.

It is not only important to ensure there are no leaks from your household pipes, fixtures and fittings but also reduce unnecessary water usage through choosing water saving products or appliances. These may include water efficient showerheads and taps, dual flush toilets, hot water system diverters, shower control devices, swimming pool covers and tree well water savers.



What are the benefits of a water efficient appliance?

There are many benefits including:

- Helping reduce water and energy bills;
- Saving drinking water especially during drought and water shortages;
- Reducing the need to build dams and extract water from rivers;
- Reducing wastewater produced and treated at sewage plants;

- Reducing energy demand for treating and transporting water and wastewater; and
- Reducing greenhouse gas emissions because less water used means less heating of water.

According to the Australian Government Department of Industry, Science, Energy and resources, the average household could save \$175 each year.

The estimated savings are:

- 65% from avoided water heating due to reduced electricity and gas costs; and,
- 35% from reduced water bills.

Did you know?

The most water-intensive products in a home are the washing machine, shower, basin and toilet.

Draft Development Control Plan amendment provisions:

One of the ways that Council proposes to support the community to further conserve drinking water and protect the region's waterways is through its proposed Draft Water Sensitive Design measures.

These will be put in place through an amendment to the Tamworth Regional Council Development Control Plan 2010.

This Development Control Plan will require that all new houses and other forms of development incorporate a range of water efficiency measures called Water Sensitive Design Essentials in the design stage of the proposed developments.

Compliance with three out of six essentials will be required.

One of the Essentials to choose from is water efficient appliances.

How do I choose a water efficient appliance?

The Water Efficiency Labelling and Standards (WELS) scheme tests and compares the water efficiency of a range of appliances and fixtures.

You can find the WELS star rating label on each product. The more stars shown on the label, the more water efficient the product is.

What water efficient appliance should I install?

In the Tamworth region, it is recommended that you install appliances and fixtures with a minimum of three WELS stars.

Where a BASIX Certificate is required for a residential developments, you must reach the BASIX water and energy targets.

The targets are based on an online calculation of the water efficient appliances and fixtures you commit to. However, a BASIX Certificate is not required for all residential development.

Can I connect the water efficient appliance myself?

All plumbing products and systems with a WaterMark Certification require installation by a licensed plumber.

Basic jobs like replacing a bathroom tap valve or a showerhead can be legally done by the householder.

There are tutorials online to guide householders who want to take the do-it-yourself approach.

To ensure the product maintains its water efficiency, the flow-control device must not be removed.

Do I need approval from Council to install water efficient appliances?

Typically replacing existing appliances, fixtures and fittings will not require Council approval. However, if you are altering plumbing connections,

you may require a Section 68 permit. If you require assistance in determining if you require approval or lodging an application, please contact the Council's Development Hub.



Applicable Fees

Where Council approval is required, Council's adopted [Fees and Charges](#) will apply.

Water saving rebates

Council has a series of rebates for water saving products which are installed in and around the home. Rebates vary depending on each product or appliance. The eligibility criteria vary for each product or appliance. For more information about rebate rules, visit [Water Rebates](#) on the Council website.

Need help?

For further information:

- Call us on (02) 6767 5555;
- Email: trc@tamworth.nsw.gov.au; or
- Visit the Development Hub counter:
Tamworth Regional Council
437 Peel Street, Tamworth
between 8:30am to 4:30pm weekdays.