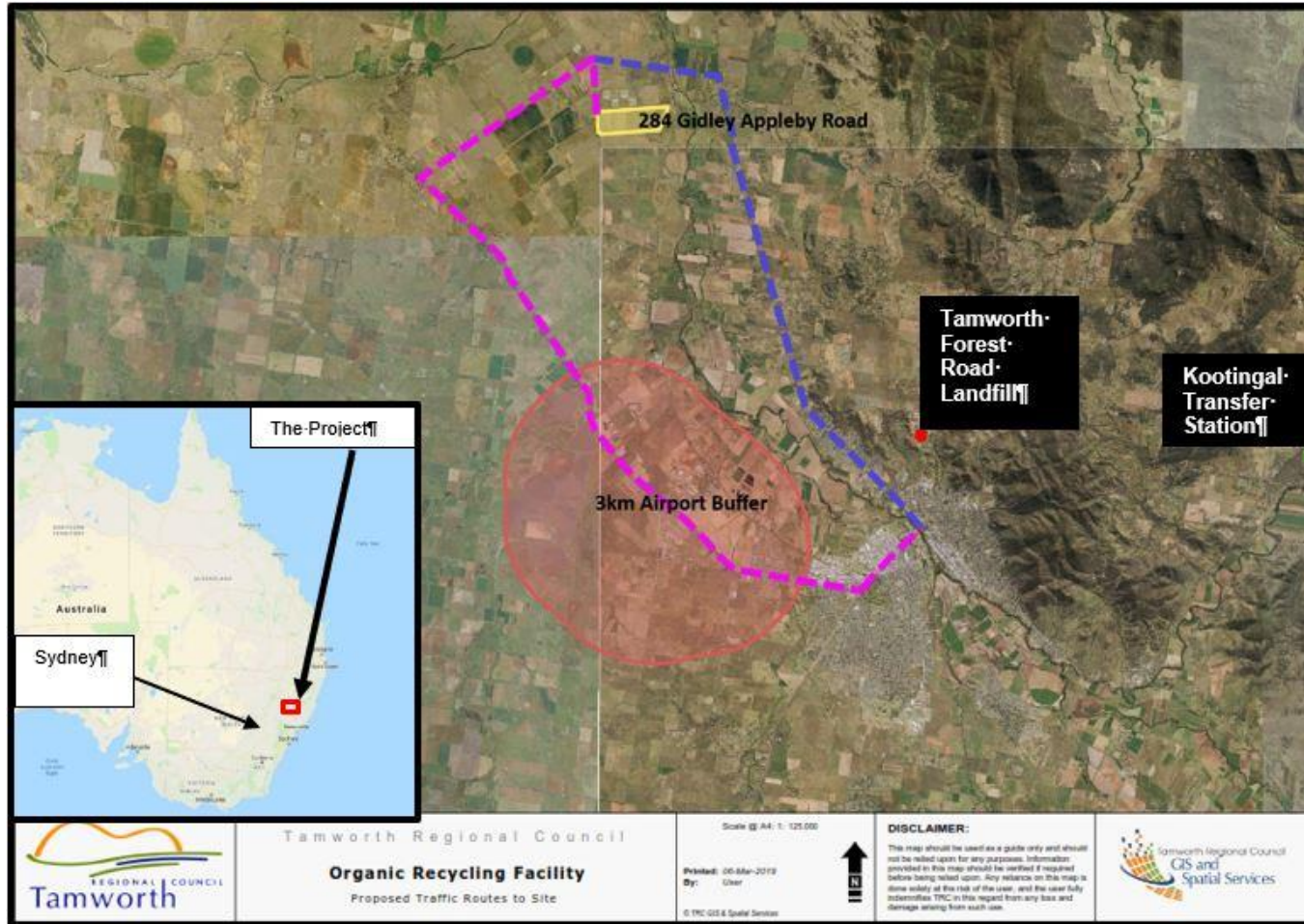




Proposed Organic Recycling Facility

Public Information Session

Proposal Overview



- Construct and Operate an Organic Recycling Facility at 284 Gidley Appleby Road
- Approximately 10km from Tamworth Airport and 15km from Tamworth CBD
- Use an enclosed tunnel composting system
- Make compost from Tamworth region organic waste streams including:
 - Food and Garden Organics (FOGO) from residential kerbside collection
 - Category 3 Organics– meat, fish, fatty foods and oils from commercial collection such as the Fish and Chip Shop
 - Commercial Organics – offal and paunch



What is an Organic Recycling Facility (ORF)?

- Purpose built facility designed with innovative processing technology
- Accepts and treats organic waste streams such as garden and food organics (residential and commercial), timber and organic waste from commercial operations and animal mortalities and offal from meat production industry
- Sorting process recovers valuable materials that when processed, produce a high-end product for landscaping and agricultural purposes

What is a Tunnel Composting System?

- An enclosed method for Stage 1 - the pasteurisation process - of composting
- Treatment of batched organic products in fully-enclosed long ventilated composting tunnels
- Each tunnel operates independently from other tunnels, allowing greater control over processing duration and resultant end product
- Fans within each tunnel enables ventilation and breakdown of organic matter
- A water spray system regulates heat and maintains optimal moisture content of the output material.



Image: Example only.

Source: Database of Waste Management Technologies, Waste Control

Benefits

Benefits of an ORF in Tamworth

- Reduces Greenhouse gases
- Diverts waste from landfill
- Commercial product produced from region's waste
- Increases the capacity of Forest Road Landfill

Benefits of an Enclosed Tunnel Composting System

- Improved Control of Aeration, Moisture and Temperature
- Reduced environmental impacts including odour
- Reduced operational demands for staff and equipment



The Planning Approval Process

Lodge a Request for Secretary's Environmental Assessment Requirements (SEARs) with the Department of Planning, Industry and Environment (DPIE).

Hold a Planning Focus Meeting with government departments and agencies

Prepare an Environmental Impact Statement in accordance with the SEARs.
Complete Community and Stakeholder Consultation activities.



We are here

Lodge a Development Application supported by an Environmental Impact Statement

Public Exhibition of the Development Application and EIS (28 Days)

Tamworth Regional Council prepares an Assessment Report for the Joint Regional Planning Panel (JRPP)

Assessment by the Joint Regional Planning Panel (JRPP)

Determination



Issues you may be concerned about

- Management of Water
- Odour from the Facility
- Bioaerosols – health risks of airborne particles
- Impact on Property Values
- Increase in local Traffic
- Visual Impact



The role of the EIS


- Describe the Proposal
- Describe the existing environment
- Identify potential environmental impacts of the Proposal within the existing environment
- Identify management measures to reduce and remove potential environmental impacts
- Inform Stakeholders and the Community



Consultation & Public Exhibition of the EIS

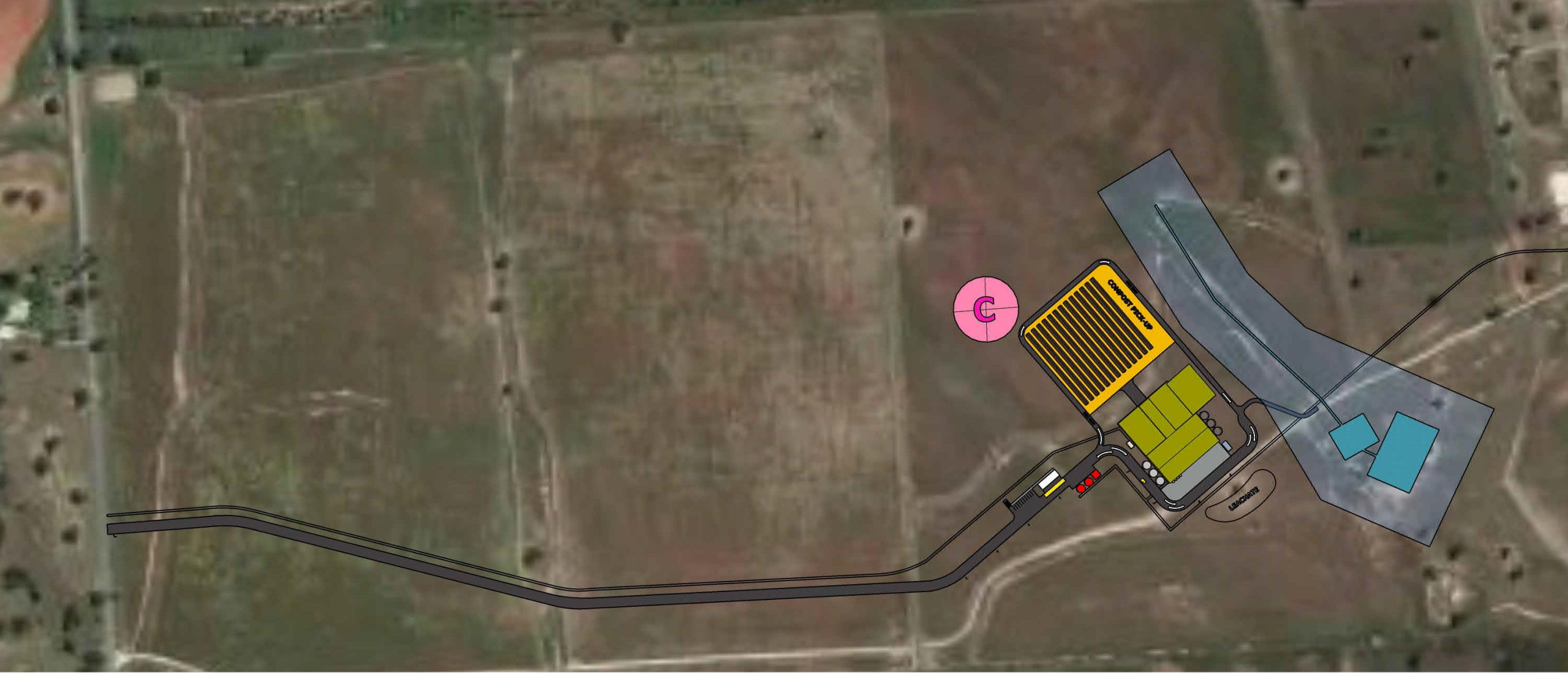


- This public meeting forms part of the Community Consultation Plan for this Project
- During preparation of the EIS and Concept Design you can provide feedback directly to Council.
- The EIS and Concept Design will also be on public exhibition for 28 days
- Following review of public submissions Tamworth Regional Council will:
 - Refine the concept design and/or EIS to address submissions as required
 - Provide a response to submissions made by Government Agencies and the Community



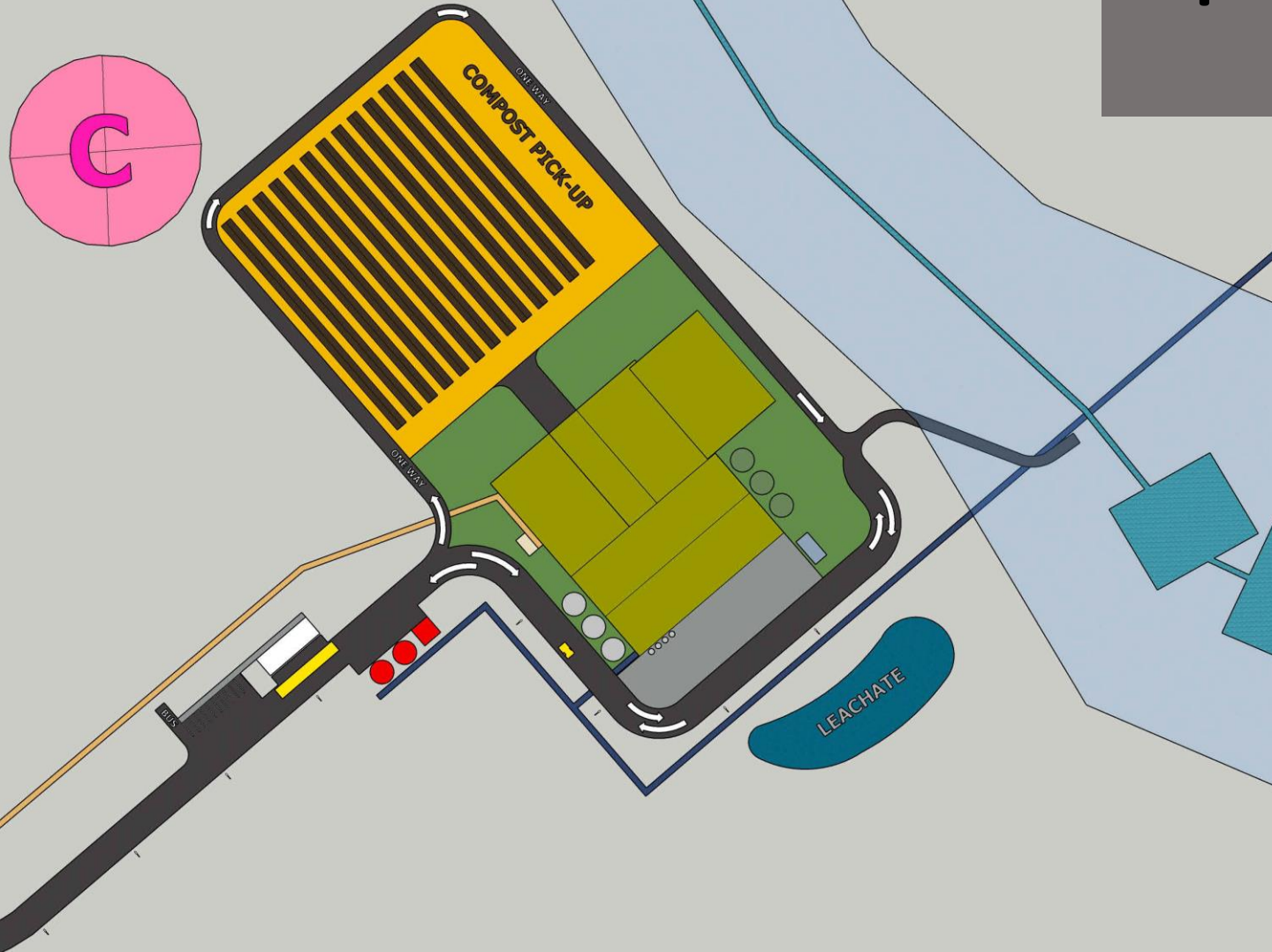
Questions you have asked us

- **Q. Will the Organic Recycling Facility site become a landfill?**
 - No, there is no proposal for the Site to be used as a future landfill site.
- **Q. Why couldn't this be built at Forest Road Landfill?**
 - The Forest Road Landfill does not have enough space to accommodate this facility. It is also located to a large residential area and presents a number of road safety concerns.
- **Q. Why couldn't this be built in the Industrial Area?**
 - Organic Recycling Facilities are restricted from being within 3km of an Airport. The Industrial Area is within this zone.



Concept Design

Option Analysis



Consideration of a number of options to:

- Maintain a 40m buffer around the existing waterway
- Make use of the existing contours on the Site – reduce cut and fill
- Ensure the site can operate safely and efficiently
- Reduce environmental impacts

Do you have more questions?

Tell us what you think



For additional information:

- Council Website:
<http://www.tamworth.nsw.gov.au/Waste/Proposed-Organic-Recycling-Facility>
- Council Consultation Platform:
<https://yourvoice.tamworth.nsw.gov.au/tamworth-organic-recycling-facility>
- Council Contact: Megan Mather
Senior Environmental Officer –
Tamworth Regional Council
(02) 6767 5049

